

Instruction

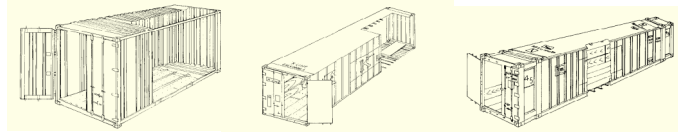
Container Types



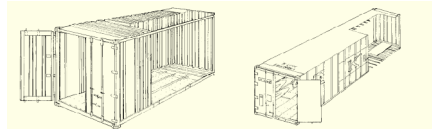
By:	Doc No./ Rev. No.:	Date:
nfr	3.3.8. / 00	20.08.2012

Below is a selection of various container types used for overseas freight. The first 3 types should be considered to be standard equipment whereas the rest should be considered to be special equipment. Special equipment can be difficult to get into position depending on destination. All dimensions and weights are guiding only. Should you be close to the maximum capacities we recommend checking directly with the shipping line in question.

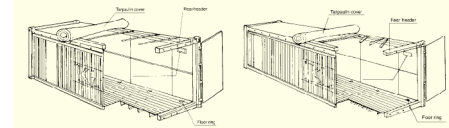
	Vægt (kgs)	Max. Nyttelast (kgs)	Dør dim.		Indvendige dim./vægt			
			Width (cm)	Height (cm)	Lenght (cm)	Width (cm)	Height (cm)	Volume (m ³)
20" DC (Dry Container)	2300	*27500	234	228	590	235	239	33
40" DC (Dry Container)	3860	26620	234	228	1203	235	239	67
40" HC (High Cube)	3990	26490	234	228	1203	235	269	76
**45" HC (High Cube)	4850	25630	234	258	1355	235	269	85



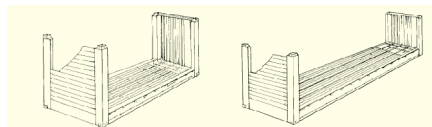
20" Reefer	2920	24080	229	221	554	225	225	28
40" Reefer	4100	26380	228	216	1167	228	221	59
40" HC Reefer	4745	27755	229	256	11574	229	255	68



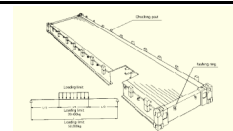
20" Open Top	2450	21550	233	223	589	235	233	32
40" Open Top	4150	26330	233	223	1202	235	233	65



20" Flat Rack	2600	21400	-	-	595	237	225	31
40" Flat Rack	4745	27755	-	-	1157	229	255	68



40" Platform	6260	50000	-	-	1219	243	-	-
--------------	------	-------	---	---	------	-----	---	---



*Container manufactured after 1998.

**Only available on shortsea